

The program

How does it work?

Every year ESA BIC Switzerland can support up to **10 new start-ups** with **comprehensive commercial and technical assistance** over a period of 24 months. Do you want to become one of them? This is how the process works:



TECHNICAL SUPPORT + BUSINESS SUPPORT + COMMUNITY EVENTS

* ESA grant is EUR 25'000 for incentive scheme and EUR 175'000 for incubation boost, all grants no equity.



«ESA BIC CH provides an interesting start-up environment which enables the exchange with other start-ups.» **9T Labs**



Our partners

Your network



Apply now!

www.esabic.ch/application

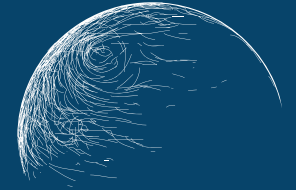
ESA BIC Switzerland
c/o ETH Zürich
Stampfenbachstrasse 56
8092 Zürich
hello@esabic.ch



f ESA BIC Switzerland @esaBICch in ESA BIC Switzerland

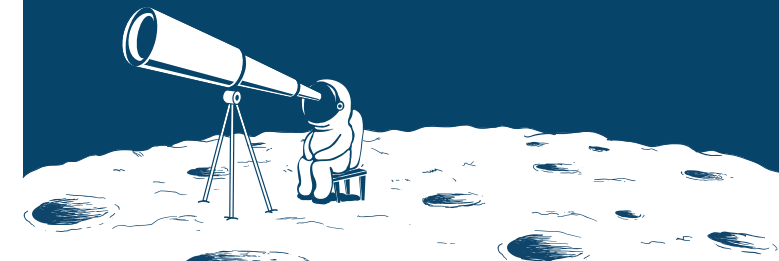
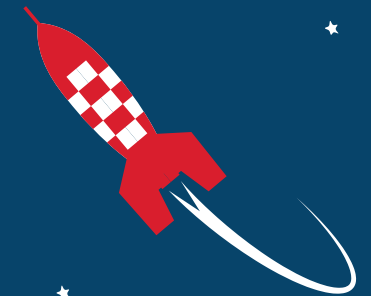


business
incubation
centre
Switzerland



Launch ideas push gravity

From Space to Earth and back





The ESA Business Incubation Centre Switzerland (ESA BIC CH) is a nationwide program, powered by the European Space Agency (ESA) and one of the world's leading universities: ETH Zürich.

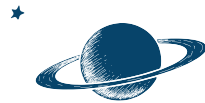
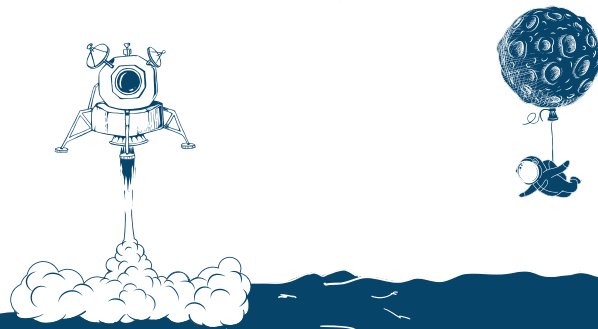
The program offers broad support packages to entrepreneurs and young **start-ups for exploiting space systems or technologies to develop their non-space businesses on earth or using technology from earth for an application related to space.**

Application fields could be navigation and positioning, earth observation, communication techniques, materials, processes, signals or robotics.

Our extensive partner network will provide you access to networking relevant to your market, offers technical and business support, and will help you find potential investors. So far, more than 665 start-ups received support from 20 Business Incubation Centres across Europe.

Let's see how much space is hidden in your innovative business idea!

«The ESA BIC CH gave us quite some visibility and we got useful contacts from potential investors.» **Ligentec**



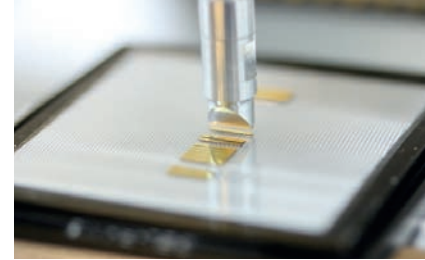
«The support from the ESA BIC CH team has been outstanding and its influence has been perceived on national level and in other competitions we have participated in.» **Skypull**



Benefits

Why should you apply as a start-up:

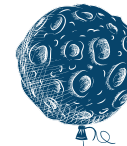
- € Up to 200k Euro in seed financing
- ✦ Access to broad network of corporate and research partners, incl. ESA
- ⚙️ Business & technical support
- 👥 Become part of a great and inspiring community
- ⊕ A Switzerland wide program



Who can apply?

Following criteria need to be fulfilled

- >5 Start-ups younger than 5 years
- ⊕ Registered in Switzerland (latest at contract signature)
- 🚀 With some „space connection“: either a space technology for an application on earth, or a technology from earth for use in space
- 🤖 Also in domains of: ICT, telecommunications, robotics, security, mobility, energy, biology, chemistry and medicine



«ESA BIC CH provided support whenever we needed it. They opened a network for us with high-level people we could not have hoped to meet otherwise.» **InVoli**

